

This is a free article provided by www.homemicro.co.uk

Use Your Mouse

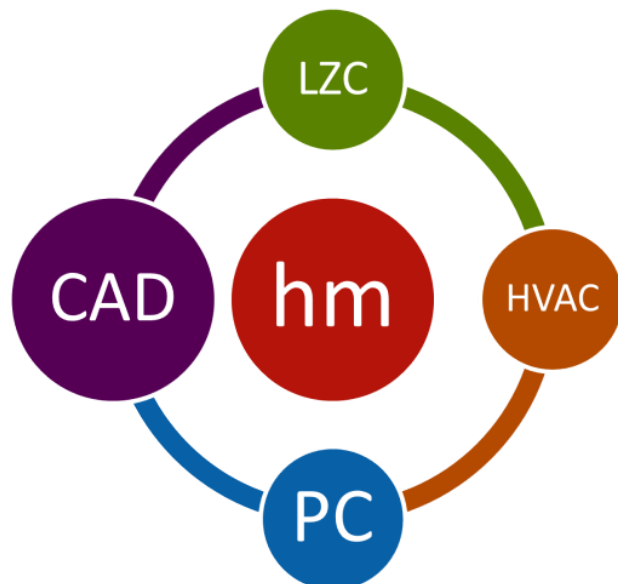
Summary

This homemicro.co.uk guide explains how to set the default action of the right mouse button to display a shortcut menu in AutoCAD. In previous releases of the software, pressing the right mouse button would initiate a RETURN. As this can be achieved by pressing ENTER or the SPACEBAR on the keyboard the right mouse button can be put to better use.

Tags: homemicro.co.uk; CAD; AutoCAD Mouse Settings

The web article relating to this subject can be found here:

https://homemicro.co.uk/cad_guides.html



The rights of publication or translation are reserved.

Confidentiality Statement

This document shall be held confidentially and not disclosed to third parties without the prior written consent of the author. Homemicro.co.uk permits you to use the Homemicro.co.uk websites for non-commercial purposes only, unless you have an Agreement with Homemicro.co.uk which states otherwise. The content and downloads that is made available to you, are protected by copyright. They may not be copied, distributed, hired, leased or used in any other way other than for non-commercial purposes, unless you have an Agreement with Homemicro.co.uk that states otherwise.

Copyright © www.homemicro.co.uk 2021

Disclaimer

While every care has been taken in the compilation of this information, Homemicro.co.uk will not be held responsible for any loss, damage or inconvenience caused as a result of inaccuracy or error within. Although care has been taken to ensure the accuracy, completeness and reliability of the information provided, homemicro.co.uk assumes no responsibility therefore. The user of the information agrees that the information is subject to change without notice. Homemicro.co.uk assumes no responsibility for the consequences of use of such information, nor for any infringement of third party intellectual property rights which may result from its use. In no event shall homemicro.co.uk be liable for any direct, indirect, special or incidental damage resulting from, arising out of or in connection with the use of the information.

Contents

Summary	1
Contents	2
List of figures	2
Mouse Wheel Settings	4
Common Issues	5

List of figures

Figure 1 - AutoCAD Options – User Preferences	3
Figure 2 - AutoCAD Right-click Customization	3
Figure 3- Adjusting Mouse scrolling in Windows	4

Setup Right-click Customization

By default, when you click the right mouse button, a dialogue box containing multiple selections is displayed. However, in previous releases of the product, you could click the right mouse button instead of pressing the ENTER key.

To change the default behaviour of the right mouse button type 'OP' to launch the Options dialogue box (Figure 1) and choose the 'User Preferences' tab. Click on the Right-click Customization button to reveal settings (Figure 2).

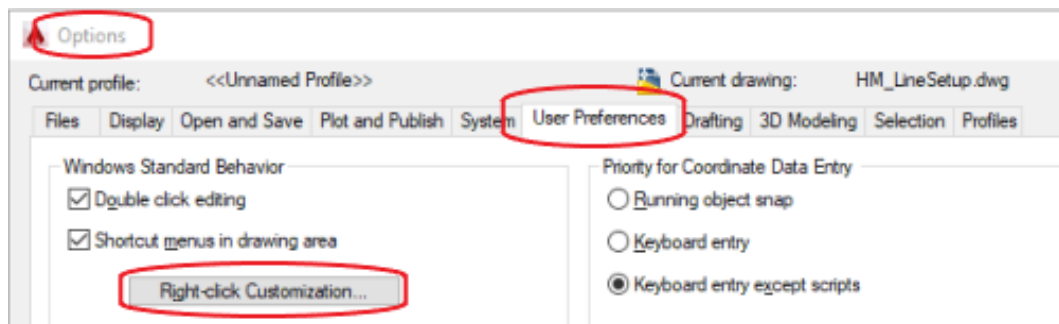
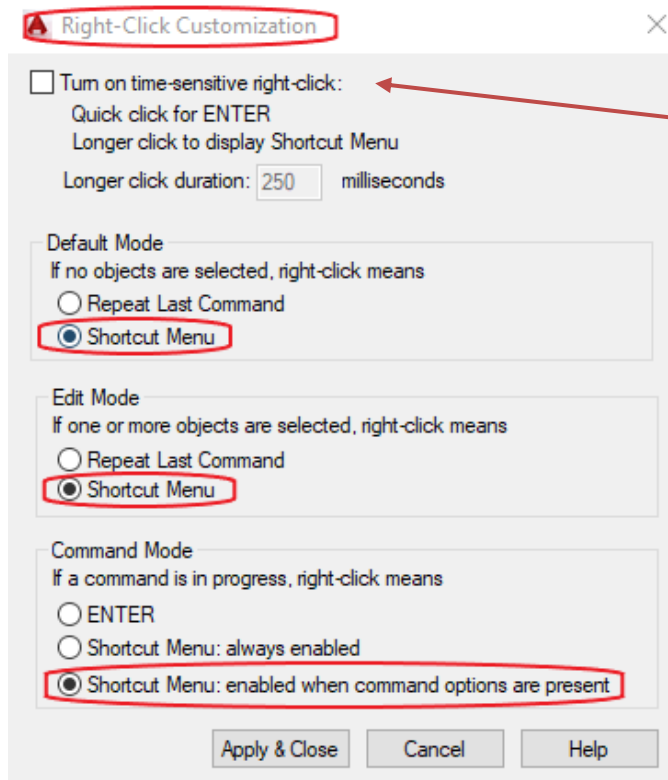


Figure 1 - AutoCAD Options – User Preferences



For those diehard fans of right click = enter, try selecting the quick click for enter option by selecting Turn on time-sensitive right-click.

Figure 2 - AutoCAD Right-click Customization

Mouse Wheel Settings

You can use the mouse wheel to zoom in a drawing without using software commands and scroll in dialogue boxes without using scroll bars. The zoom percentage and scroll value for the mouse wheel can be adjusted.

To adjust the zoom percentage, change the value of the ZOOMFACTOR system variable. The initial value of ZOOMFACTOR is 10 (range 3-100). The value represents the percentage change in zoom level for each increment of wheel rotation. A ZOOMFACTOR of 10 will zoom by 10 percent for each increment of wheel rotation.

The scroll value can be adjusted in Windows Control Panel too.

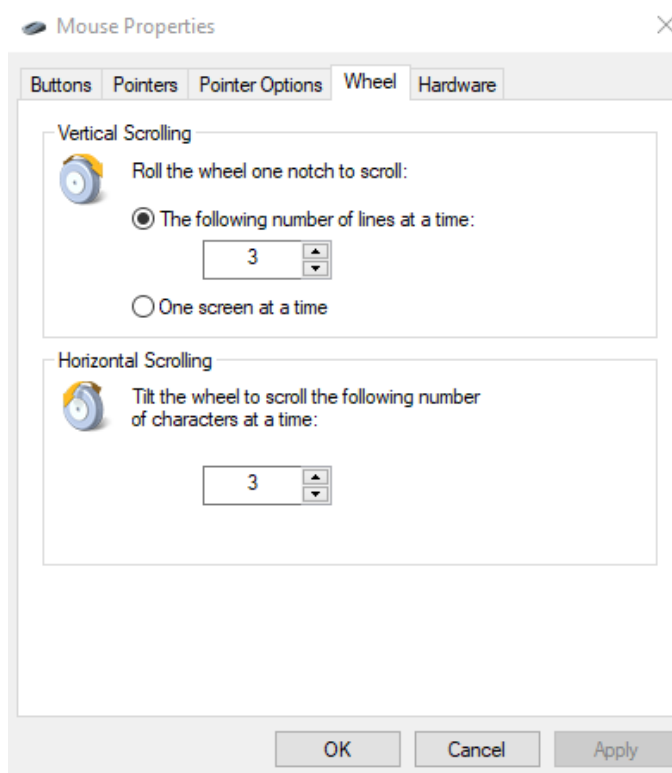


Figure 3- Adjusting Mouse scrolling in Windows

In Windows 10 open the Settings app and click the **Devices** category. Select the **Mouse** tab, then click the **Additional mouse options** link on the right side.

Available settings may vary; they depend on the make of the mouse and the mouse driver.

Common Issues

Issue: The wheel button on the mouse does not perform any zoom functions.

Try the following troubleshooting steps:

- a) Verify that the MBUTTONPAN system variable is set to 0.
- b) Try restoring a valid acad.mns menu file from the installation AutoCAD CD.
- c) Update the mouse driver from the manufacturer's website.

Issue: Dynamic zooming is not default functionality of a Wheel Mouse.

Try the following troubleshooting steps:

- a) Check the mouse icon in the Windows Control Panel to see if there are any settings for the wheel. If there are, turn off the settings.
- b) Check to see that there are no other mouse utilities (For example, Logitech has a Logimouse utility) overriding the settings for the mouse wheel. If there are, turn them off.
- c) If dynamic zooming works in other applications, press the CTRL key while rolling the wheel.
- d) Update the mouse driver from the manufacturer's website.

Issue: Toolbar buttons must be selected more than once to execute a command.

Try the following troubleshooting steps:

- a) In Windows Control Panel, decrease the pointer speed. The name of this setting varies, depending on the version of Windows you are using.
- b) Check to see that there are no other mouse utilities (For example, Logitech has a Logimouse utility) overriding the settings for the mouse wheel. If there are, turn them off.

Issue: You are not able to pan or zoom in the current view with a wheel mouse.

Certain commands are not available when a drawing is displayed in perspective view mode. The zoom and pan operations in perspective view are some of commands that are not allowed. Although this behaviour is as designed, this may not be apparent because the message that is displayed on the status bar stating: Cannot real time pan or zoom. Regenerate the drawing.

You can pan and zoom using the mouse wheel by turning off the perspective mode for the current view. There are two ways to do this:

- a) Enter 3dorbit on the command line. Right-click on the screen and click Projection > Parallel on the shortcut menu.
- b) Enter dview on the command line. Select OFF. Press ENTER twice to exit the command.



Thank you for downloading and viewing this document.

www.homemicro.co.uk